

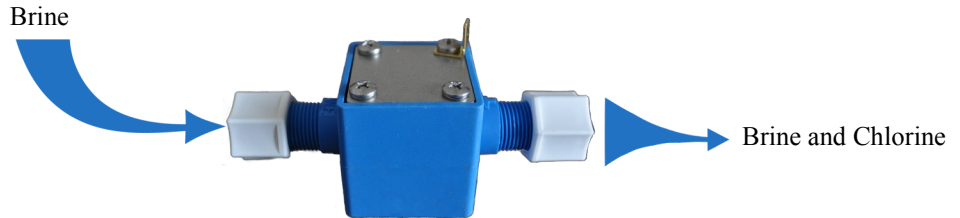


Disinfector Series

Hardness/Iron Reduction And Disinfector

- *Reduces Staining*
- *Sparkling Dishes*
- *Bottom Line Savings*
- *Brighter Laundry*
- *Protects Plumbing*

- **Automatic Chlorine Generator.** Disinfects the unit and reduces iron and sulfur bacteria each regeneration.
- **Two Units in One.** Removes iron and hardness. Zeolite provides excellent filtration and removes iron and hardness through ion exchange.
- **Fully Adjustable Control.** Programming can be set to handle your exact water conditions.
- **Non-Corrosive Construction.** All components are made of fiberglass, stainless steel, or similar materials to provide many years of service.
- **Rugged Mechanical Piston Valve.** No solenoids or flapper valves to stick.
- **Full Flow Bypass Valve.** Simple to use valve allows you to bypass the unit for lawn sprinkling or during filter maintenance.



Model Number	Grain Capacity		Type of Regeneration	Service Flow Rate		Dimensions*		
	Min.	Max.		Peak	Cont.	W	H	D
Z1054	18,000	30,000	Meter/Time Clock	8	3	10	64	16
Z1248	27,000	45,000	Meter/Time Clock	12	4	12	58	16
Z1354	36,000	60,000	Meter/Time Clock	14	5	13	64	16

*NOTE: Dimensions do NOT include 18" brine tank.