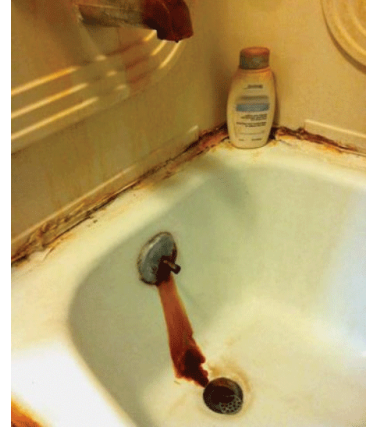


- Reduces stains
- Eliminates odors
- Brighter laundry
- Protects plumbing
- Ready out of box to connect to 1" or 3/4" plumbing



- **Media Separate.** Filter comes less media for installer customization.
- **No Chemicals.** A chemical regenerant is not required.
- **No In-Line Venturi to Plug or Adjust.**
- **No Air Compressor.** The noise and expense of compressors are eliminated.
- **No Air Release Valve Required.**
- **Small Footprint.** Small footprint allows for ease of installation.
- **Rugged Mechanical Piston Valve.** No solenoids or flapper valves to stick.
- **Full Flow Bypass Valve.** Easy to use, two handle valve allows you to water the garden or yard with raw water. Large porting prevents pressure drop.

Model Number	Media cu. ft.	Backwash Rate (gpm)	Flow Rate (gpm)		Overall Dimensions			Pipe Size
			Peak	Service	D	W	H	
PIF1-1054	1.0	5.3	10	5	16"	11"	62"	3/4" & 1"
PIF1-1248	1.5	7.5	14	8	16"	13"	56"	
PIF1-1354	2.0	9	17	9	16"	14"	62"	
PIF1-1465	2.5	11	19	11	16"	15"	74"	

NOTE: Add suffix "-DH" if a dome hole is desired. Ex: PIF1-1054-DH

